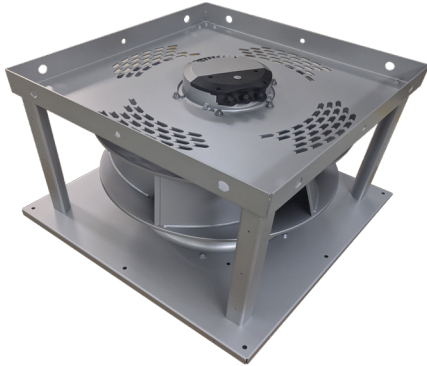


# Modular plug fan

Backward curved - 450, 500, 560mm

**ebmpapst**

the engineer's choice



**Highlights:**

- Control input: 15-50 VDC
- Output: 3.3-24 VDC, Pmax 800 mW
- Integrated PI controller
- RS485 MODBUS
- Over-temperature protected motor/electronics
- Soft start, motor current limit
- Locked motor protection
- Line undervoltage/phase failure detection
- UL/CSA approval rating
- IP55 ingress protection rating

**Material:**

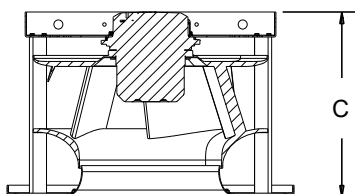
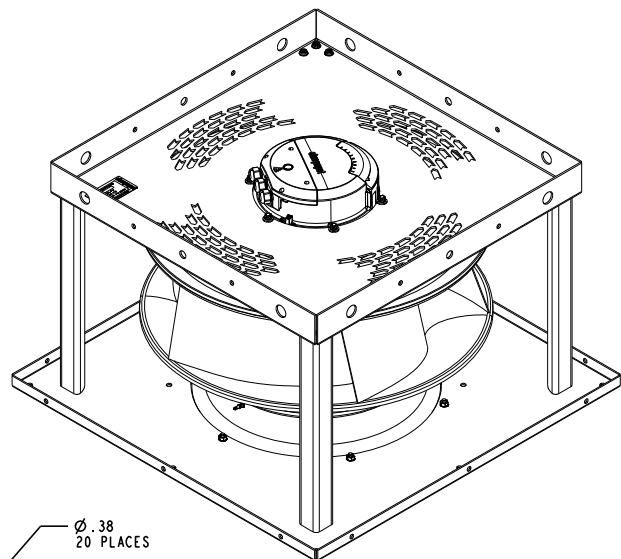
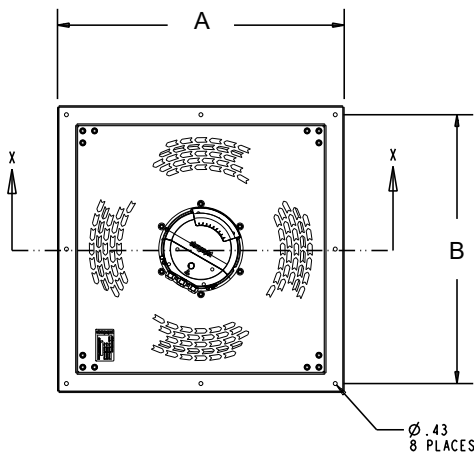
- Electronics housing: Die-cast aluminum
- Impeller: Sheet aluminum
- **Mounting position:** Shaft horizontal or rotor down  
Rotor on top per request
- **Condensate discharge holes:** Rotor-side
- **Direction of rotation:** Clockwise, viewed toward rotor

**Nominal data**

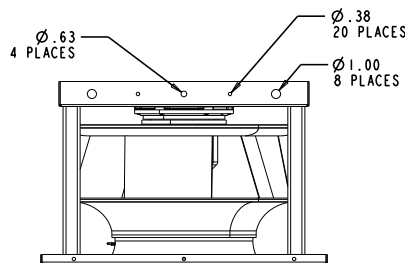
Part number	Type	Motor	Air flow CFM	Phase	Voltage VAC	Nominal voltage range VAC	Frequency Hz	Power input (1) Watts	Speed (1) RPM	Current draw (1) A	Mass lbs	Dimensional data (in)		
											A	B	C	
EG1R240450A26	R3G450-PA29-13	M3G150-FF	7840	3~	230	200 .. 240	50/60	3950	2300	10.8	105	24.8	22.83	18.38
EG1R480450A26	R3G450-PA31-03	M3G150-FF	8240	3~	460	380 .. 480	50/60	4500	2480	6.1	105	24.8	22.83	18.38
EG1R240500A26	R3G500-PA33-13	M3G150-FF	9065	3~	230	200 .. 240	50/60	3750	1940	10.2	105	24.8	22.83	19.61
EG1R480500A26	R3G500-PB24-03	M3G150-IF	9380	3~	460	380 .. 480	50/60	4200	2000	5.8	115	24.8	22.83	19.61
EG1R240560A26	R3G560-PB37-13	M3G150-IF	10675	3~	230	200 .. 240	50/60	3750	1590	10.3	135	31.5	29.53	20.31
EG1R480560A26	R3G560-PB31-03	M3G150-IF	11360	3~	460	380 .. 480	50/60	4400	1700	6.0	135	31.5	29.53	20.31

(1) Nominal data at maximum load.

**Technical drawings**



SECTION X-X

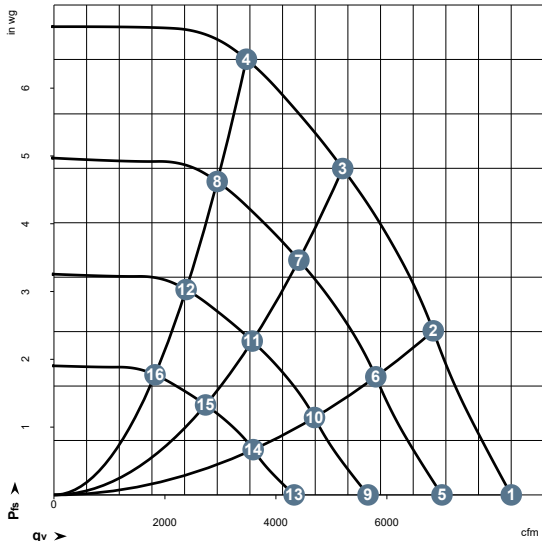


K-module - Sizes 450-560mm

Performance curves

460V data

Note: 230V performance curves & data available upon request.

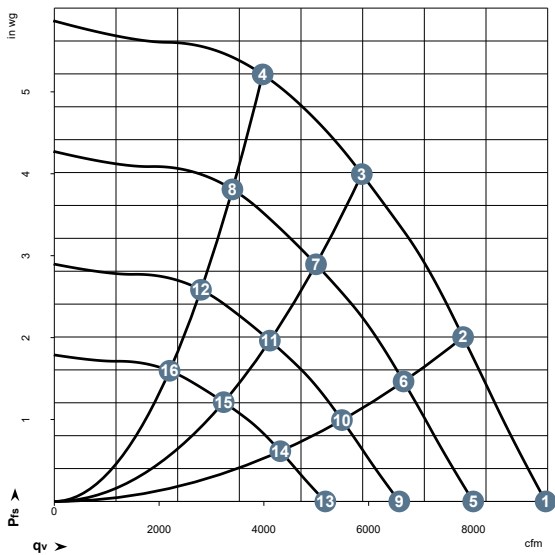


450mm 4.5kW

	n rpm	Pe W	I A	LpAin dB(A)	LwAin dB(A)
1	2480	2623	3.6	92	99
2	2480	3753	5.2	84	91
3	2480	4500	6.1	78	85
4	2480	4356	6.0	83	89
5	2100	1602	2.2	88	95
6	2100	2292	3.2	80	87
7	2100	2691	3.7	74	81
8	2100	2657	3.7	79	85
9	1700	850	1.2	82	90
10	1700	1216	1.7	74	82
11	1700	1428	2.0	69	76
12	1700	1410	1.9	73	80
13	1300	380	0.5	75	83
14	1300	544	0.7	68	75
15	1300	638	0.9	62	69
16	1300	630	0.9	67	73

Operating points

	qv cfm	psf in.wg
1	8240	0.00
2	6835	2.41
3	5205	4.82
4	3470	6.42
5	6990	0.00
6	5800	1.74
7	4415	3.47
8	2940	4.64
9	5660	0.00
10	4695	1.14
11	3575	2.27
12	2380	3.04
13	4330	0.00
14	3590	0.67
15	2730	1.33
16	1820	1.78

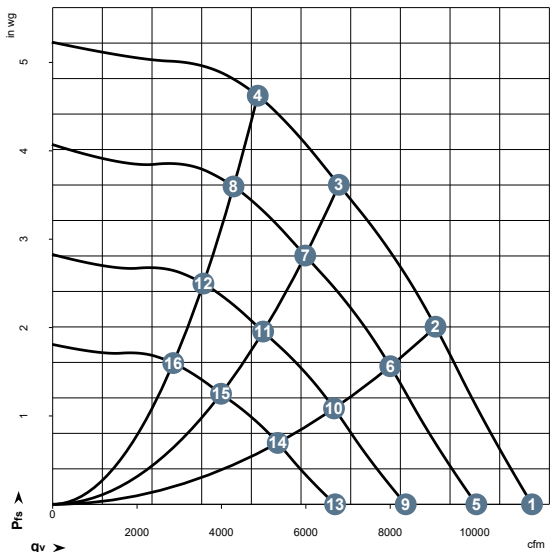


500mm 4.5kW

	n rpm	Pe W	I A	LpAin dB(A)	LwAin dB(A)
1	2000	2490	3.5	96	103
2	2000	3445	4.8	87	94
3	2000	4200	5.8	79	86
4	2000	4029	5.5	82	88
5	1700	1543	2.2	92	99
6	1700	2150	3.0	83	90
7	1700	2580	3.6	75	82
8	1700	2522	3.5	79	84
9	1400	862	1.2	87	94
10	1400	1201	1.7	78	86
11	1400	1441	2.0	70	77
12	1400	1409	1.9	74	80
13	1100	418	0.6	81	88
14	1100	582	0.8	72	79
15	1100	699	1.0	64	71
16	1100	683	0.9	68	73

Operating points

	qv cfm	psf in.wg
1	9380	0.00
2	7805	2.01
3	5870	4.01
4	3975	5.22
5	7995	0.00
6	6665	1.47
7	4995	2.89
8	3400	3.84
9	6585	0.00
10	5490	1.00
11	4115	1.96
12	2800	2.61
13	5175	0.00
14	4315	0.61
15	3230	1.21
16	2200	1.61



560mm 4.5kW

	n rpm	Pe W	I A	LpAin dB(A)	LwAin dB(A)
1	1700	2717	3.8	94	102
2	1700	3739	5.1	85	91
3	1700	4400	6.0	75	83
4	1700	4238	5.8	79	87
5	1500	1876	2.6	91	99
6	1500	2563	3.5	82	88
7	1500	3012	4.1	72	80
8	1500	2908	4.0	76	83
9	1250	1086	1.5	86	95
10	1250	1483	2.0	77	84
11	1250	1743	2.4	68	75
12	1250	1683	2.3	71	79
13	1000	556	0.8	81	89
14	1000	759	1.0	72	78
15	1000	892	1.2	62	69
16	1000	862	1.2	66	73

Operating points

	qv cfm	psf in.wg
1	11360	0.00
2	9075	2.01
3	6785	3.61
4	4860	4.62
5	10040	0.00
6	8000	1.58
7	5985	2.81
8	4285	3.61
9	8365	0.00
10	6665	1.10
11	4990	1.96
12	3570	2.51
13	6695	0.00
14	5335	0.70
15	3990	1.25
16	2860	1.61